

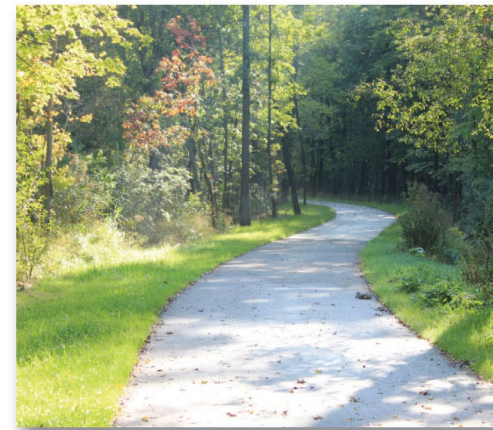
Fair Housing

Dr. Mandy (Mandeep) Grewal

August 6, 2024

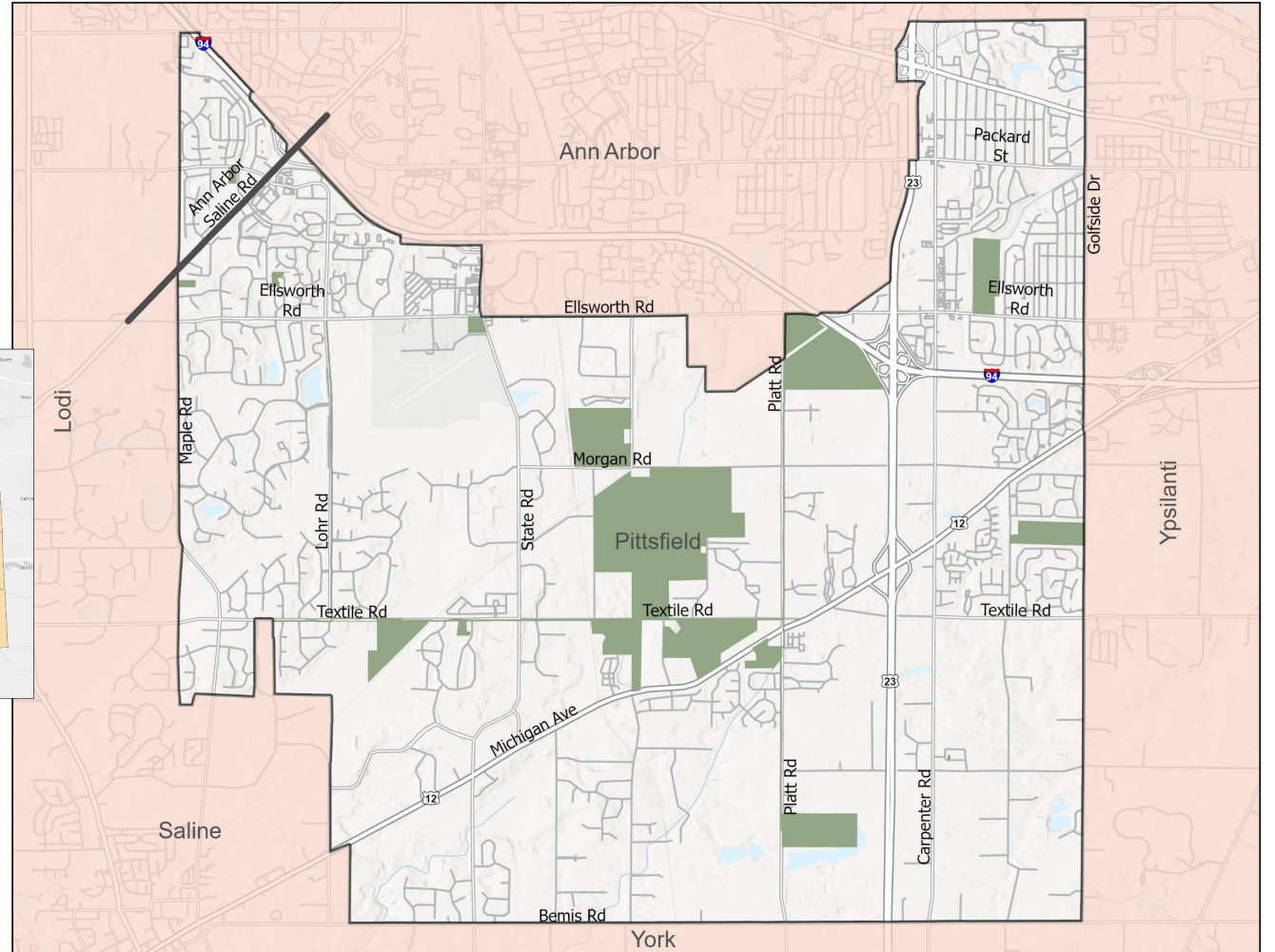
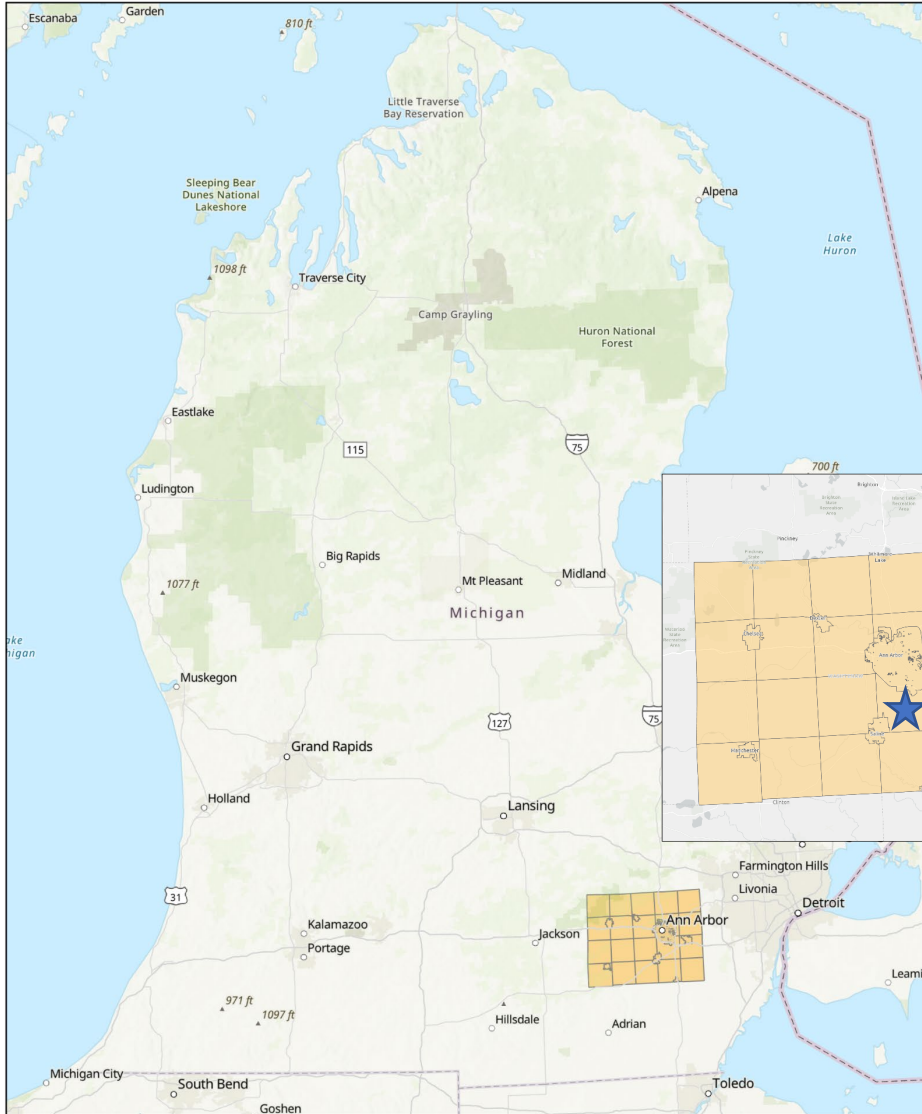


Pittsfield Charter Township



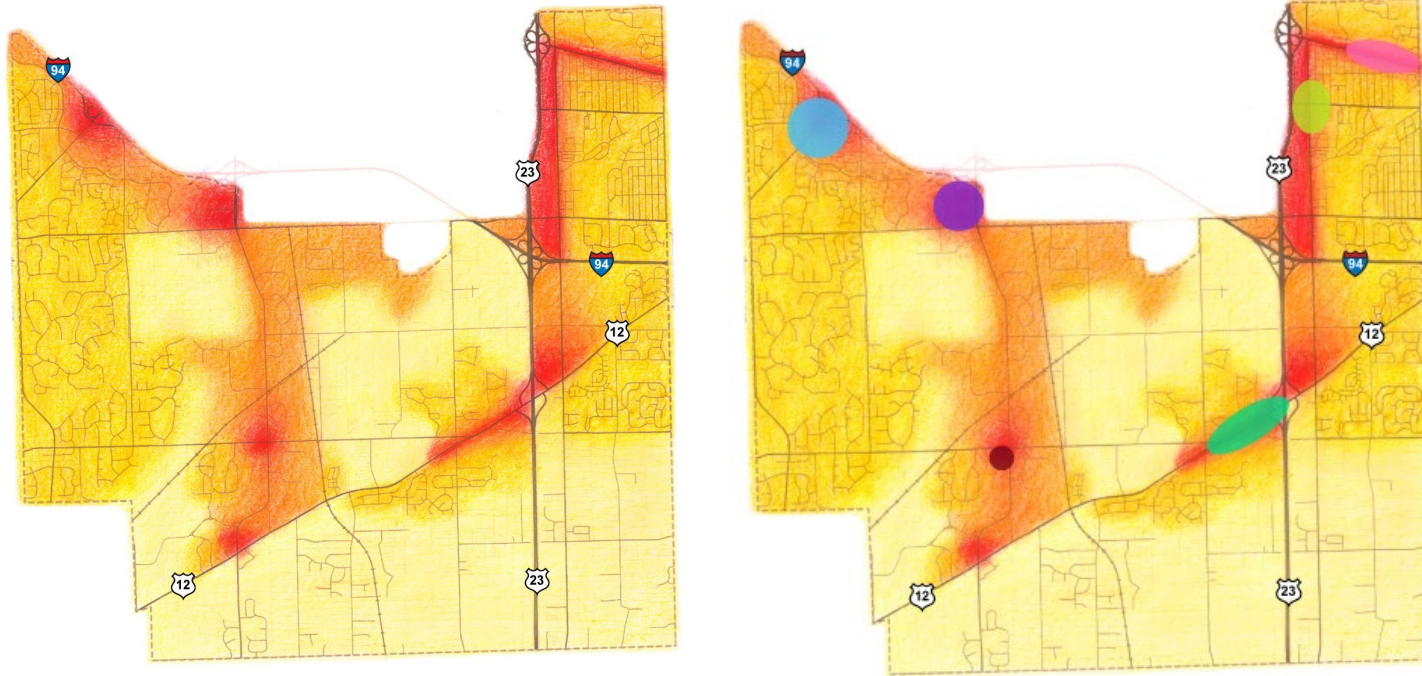


Geographic Location





Planning Processes



GET INVOLVED
2010 Pittsfield Plan

Based on a community-wide survey certain areas of the township have been identified to be the focus of design workshops that will envision future land uses at these locations.

Design Workshop
with the University of Michigan's
Master of Urban Design Program
FRIDAY February 5th
Stop in between 12:30-6:30 PM

Design Workshop
with McKenna Associates and AECOM
MONDAY February 22nd
12-2 PM: Open House & U of M Student Presentation
6-8 PM: Public Lecture & Interactive Activities
TUESDAY February 23rd
12-2 PM: Open House
6-8 PM: Presentation & Final Input

LOCATION: Pittsfield Township Administrative Building
6201 W. Michigan Ave, Ann Arbor, MI 48106
734 | 822-3130
2010



Share Your Vision
What is your future for Pittsfield?

- Connecting "islands" to the Township Core.
- Renewal of older sections of Township
- Preservation of open spaces.
- Development of cultural assets/historic preservation



2010 Pittsfield Master Plan

pittsfield-mi.gov/masterplan

2020 Sustainable Vision

www.pittsfield-mi.gov/masterplan

Preserving Pittsfield MASTER PLAN

Examples of Community Involvement



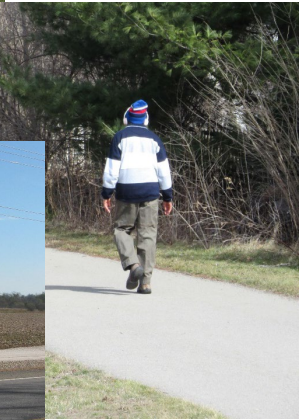
2010
Disconnected Suburban Sprawl





2012-2024
Land Use:Housing





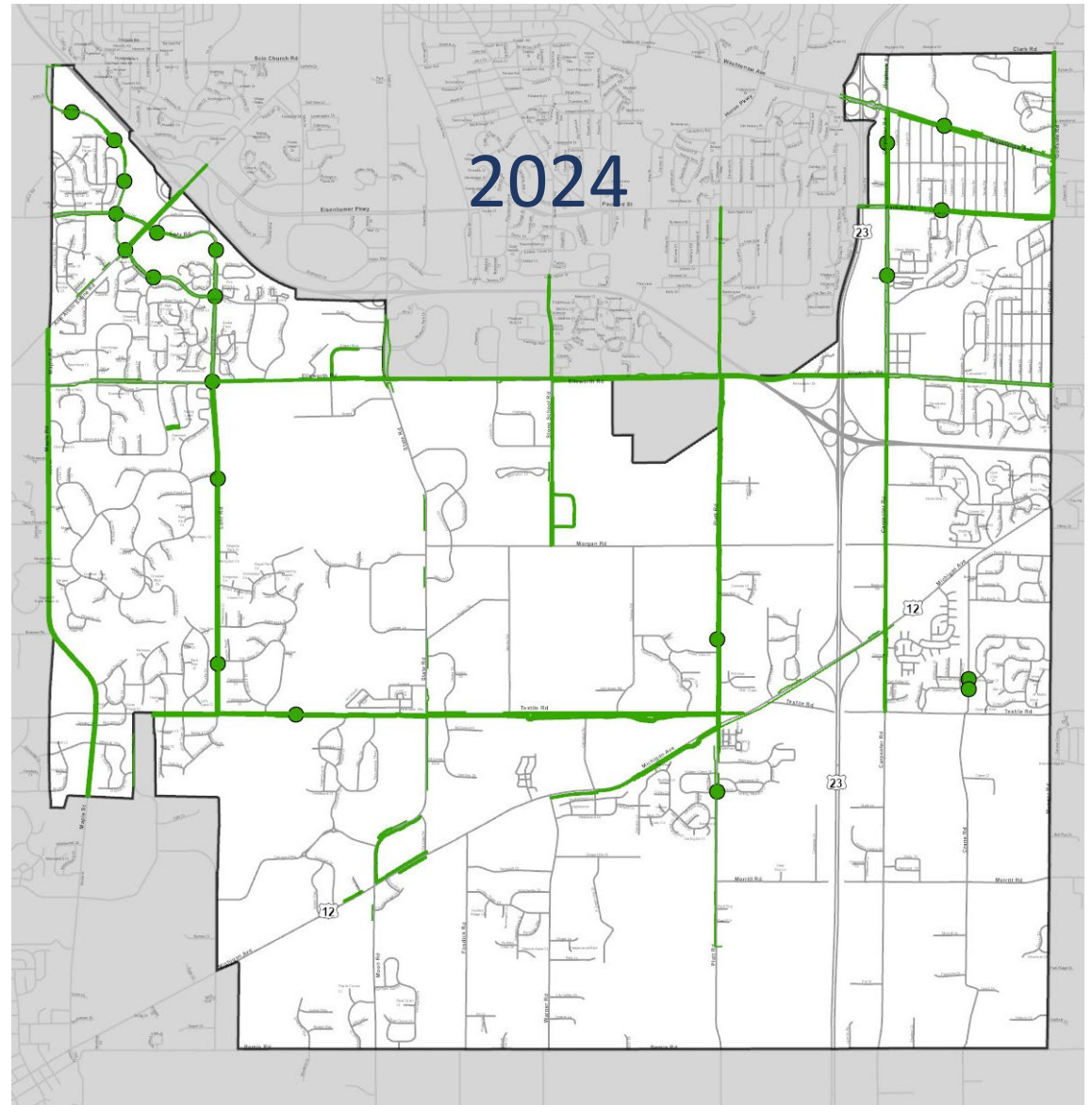
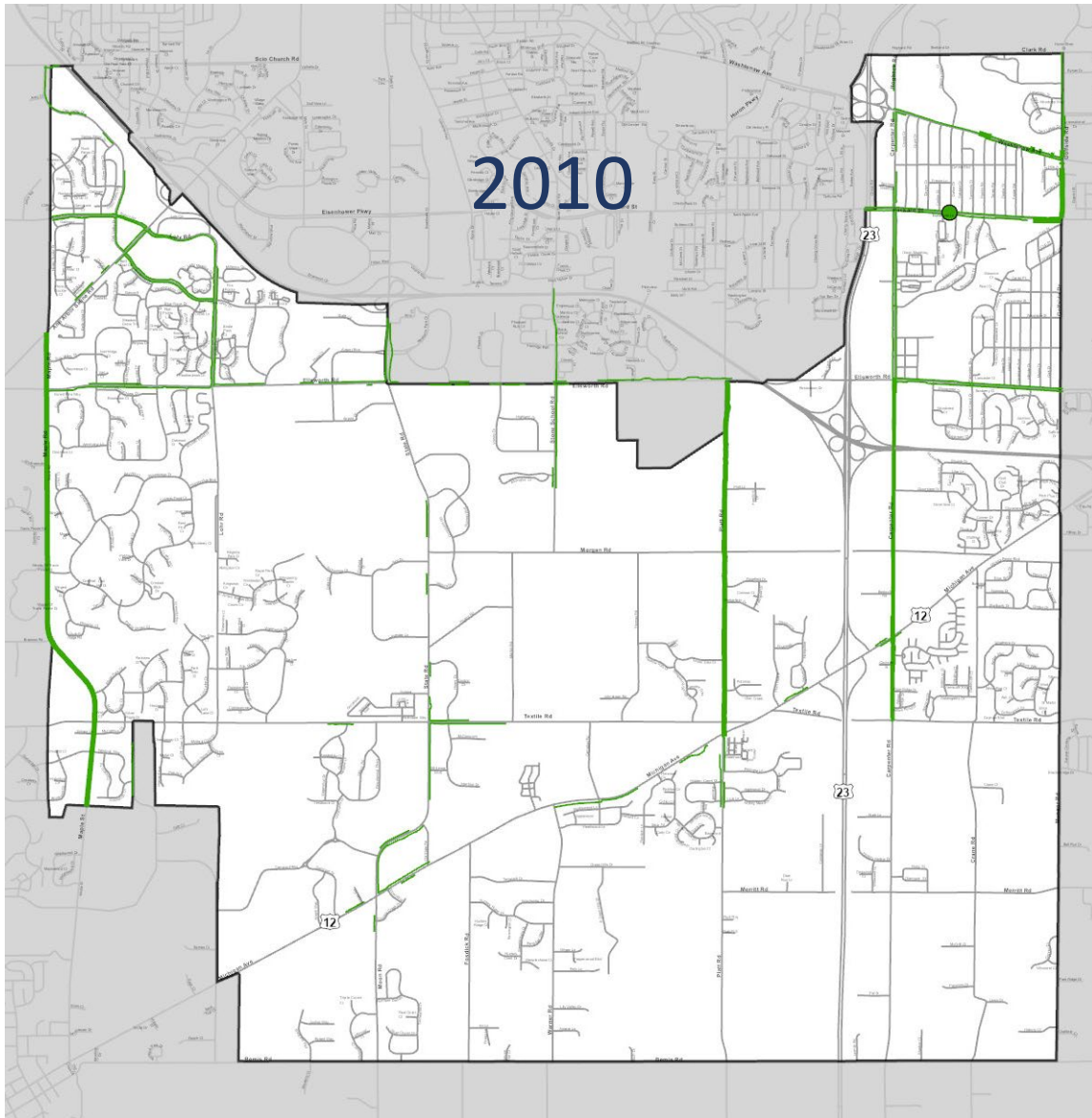
2012-2024

Land Use: Transportation



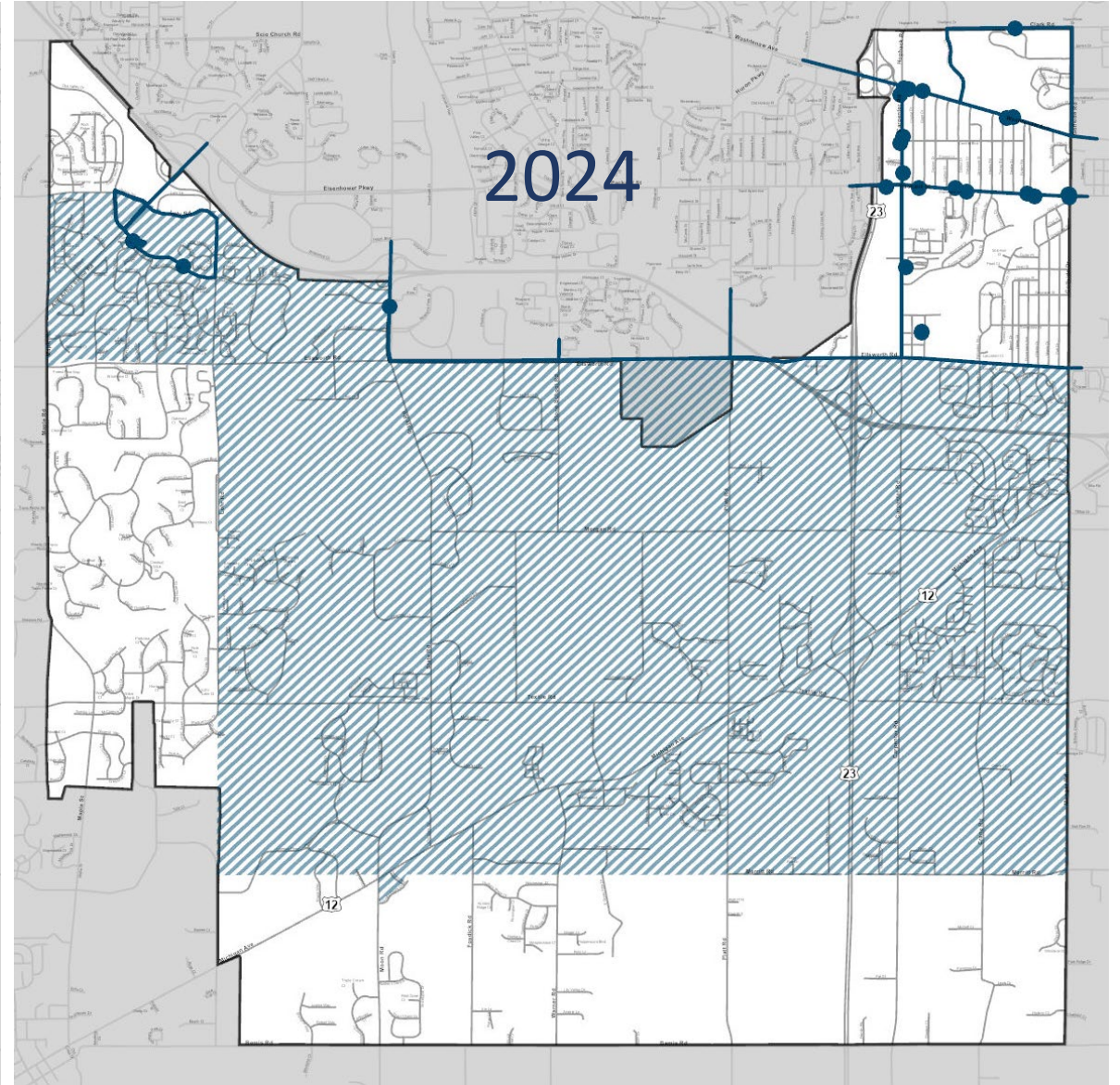
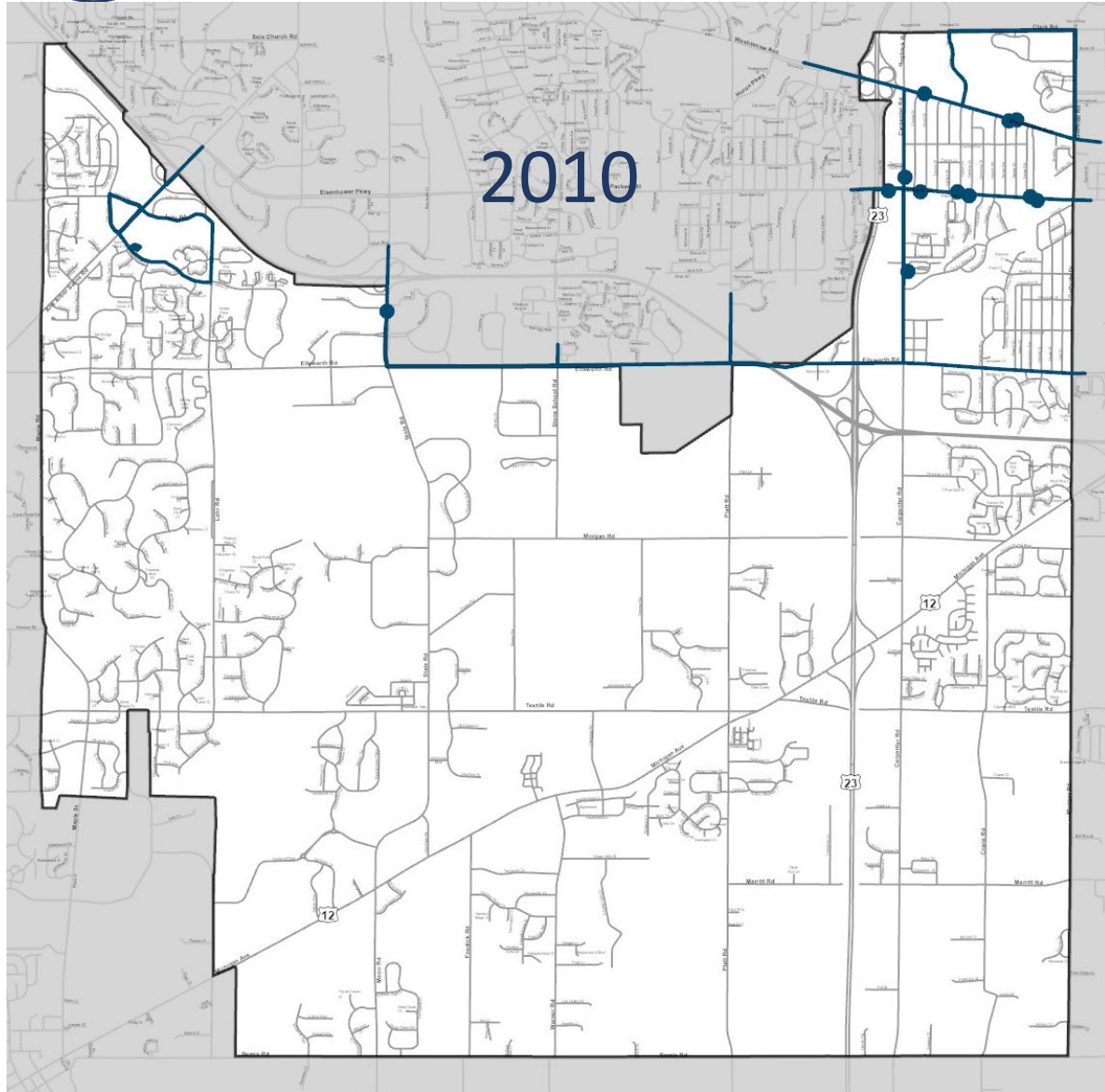


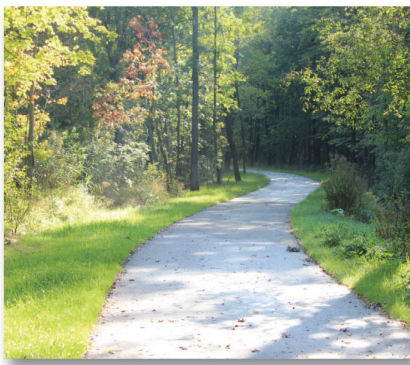
Non-Motorized Network





Transit Routes





“A community where a retired senior can live in a condo and go for a walk everyday while being able to take a bus to get groceries and prescriptions or meet friends at a restaurant. A community where a family can live in a safe neighborhood from where their children can walk/bike to a public park and the parents can find a job locally. A community where a single parent can feel safe and have access to good jobs, schools, recreation, and basic amenities such as local food and health care. A community where young folks can find a starter home or apartment and walk/bike to work and recreational activities. A community where folks can work in the service sector and be able to walk/bike/take a bus to access daily amenities. A community where green spaces are integrated into built spaces and local agriculture is economically viable. A community where folks can walk through recreational and nature trails from their place of work or residence. A community where open space preservation and infill development is a top priority. A community where everyone is welcome and contributes to its diversity and vibrancy. A community where we Set the Gold Standard in Public Service.”

2024

Conclusion: Preserving Pittsfield